



NEW!

ENGINE

Model	: ISUZU GI-4HK1X
Type	: Water-cooled, 4 cycle, 4 cylinders, line type direct injection, turbocharger, intercooler, electronic diesel engine
Power	: 161 HP (120 kW) @2000 rpm / SAE J1995 (Gross) : 151 HP (113 kW) @2000 rpm / SAE J1349 (Net)
Max. Torque	: 657 Nm @1500 rpm (Gross)
Displacement	: 5193 cc
Bore and Stroke	: 115 mm x 125 mm
Emission Class	: R96 (Stage-IIIa)

UNDERCARRIAGE

X Type Lower Frame Construction Pentagon Box Type Chassis	
Shoe	: Triple grouser
No. Of Shoes	: 2 x 49
No. Of Lower Rollers	: 2 x 9
No. Of Upper Rollers	: 2 x 2
Track Tensioning	: Hydraulic Spring Tensioning

CAB

- Improved operator's all round visibility
- Increased cabin internal space
- Use of six viscomount cabin mountings that dampen the vibrations
- High capacity A/C
- High resolution, LED backlight, color LCD display
- Opera Control System
- Cooled storage room
- Glass holder, book and object storage pockets
- Pool type floor mat
- Improved operator's comfort through versatile adjustable seat
- Ergonomically redesigned cabin through relocated switch board, and re-styled travel pedals and joysticks.

TRAVEL AND BRAKERS

Travel	: Fully hydrostatic
Travel Motors	: Axial piston type
Reduction	: 2 stage planetary gear
Travel Speed	
High Speed	: 5,8 km/h
Low Speed	: 3,8 km/h
Max. Drawbar Pull	: 18.365 kqf
Gradeability	: 35° (%70)
Parking Brake	: Hydraulic multi disc type
Ground Pressure (600mm Shoe)	: 0,50 kgf/cm ²

LUBRICATION

Centralized lubrication system is provided for lubrication all difficult-to-reach parts on the components, such as boom and arm

HYDRAULIC SYSTEM

Main Pump	
Type	: Double variable displacement axial piston pumps
Max. Flow	: 2 x 233 L/min
Pilot Pump	: Gear, 20 L/min
Relief Valves	
Attachment	: 350 kgf/cm ²
Power Boost	: 370 kgf/cm ²
Travel	: 350 kgf/cm ²
Swing	: 306 kgf/cm ²
Pilot	: 40 kgf/cm ²
Cylinders	
Main Boom	: 2 x ø 120 x ø 85 x 1.300 mm
Stick Cylinder	: 1 x ø 135 x ø 95 x 1.520 mm
Bucket Cylinder	: 1 x ø 120 x ø 85 x 1.060 mm

OPERA CONTROL SYSTEM

- Easy-to-use control panel and menus
- Overheat prevention and protection system without interrupting the work
- Automatic electric power-off
- Maximum efficiency by selection of power and work modes
- Error mode registry and warning system
- Improved fuel economy and productivity
- Automatic idling Selection of multi-language on control panel
- Rear-view, arm-view camera (Optional)
- Possibility to register 27 different operating hours
- Anti-theft system with personal code
- Real time monitoring of operational parameters such as pressure, temperature, engine load

SWING SYSTEM

Swing Motor	: Axial piston type integrated with shock absorber valves
Reduction	: 2 stage planetary gear box.
Swing Brakes	: Hydraulic multi disc type, automatic warnings
Swing Speed	: 11,9 rpm

CAPACITY

Fuel Tank	: 405 L	Engine Oil	: 21 L
Hydraulic Tank	: 152 L	Radiator	: 33 L
Hydraulic System	: 285 L		

ELECTRICAL SYSTEM

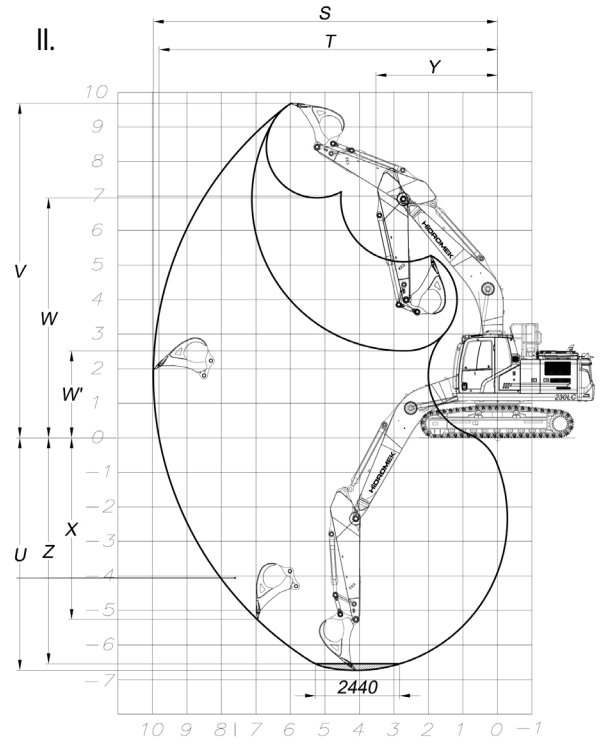
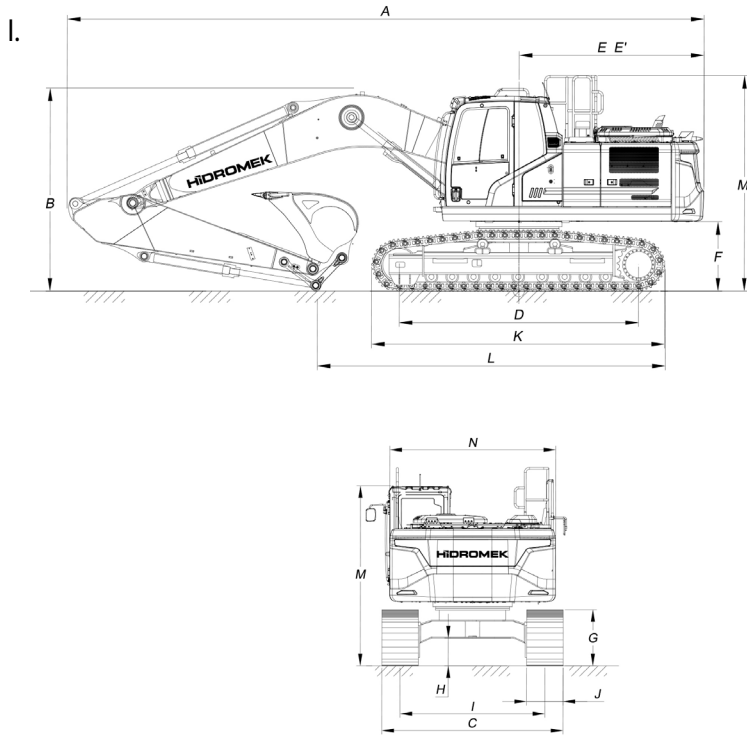
Voltage	: 24V
Battery	: 2 x 12 V x 100 Ah
Alternator	: 24V / 50 A
Starting Motor	: 24V / 5 kW

OPERATING WEIGHT

Standard machine operating weight : 23.400 kg

Operational weight, complying with the ISO 6016 standards, includes full fuel tank, hydraulic system and other liquids, 75kg operator weight and standard equipped machine weight. Optional equipments are not included.

HMK 230 LC H4



I. GENERAL DIMENSIONS

Boom Dimension	5.70 mm	
Arm Dimension	*2.92 mm	2.40 mm
A - Overall Length	9.680 mm	9.680mm
B - Boom (Shipping) Height	3.120 mm	3.110 mm
C - Lower Frame Width	2.990 mm	
D - Track Base Length	3.640 mm	
E - Counterweight Distance	2.810 mm	
E' - Countweight Turning Radius	2.850 mm	
F - Upper Chassis to Ground Clearance	1.065 mm	
G - Crawler Height	935 mm	
H - Ground Clearance	465 mm	
I - Track Gauge	2.390 mm	
J - Shoe Width	600 mm	
K - Lower Chassis Length (from shoe)	4.460 mm	
L - Shipping Length	5.320 mm	5.920 mm
M - Cab Height	3.010 mm	
N - Upper Frame Width	2.740 mm	

* Standard

II. WORKING DIMENSIONS

Boom Dimension	5.70 mm	
Arm Dimension	*2.92 mm	2.40 mm
S - Maximum Reach Distance	9.970 mm	9.560 mm
T - Maximum Reach at Ground Level	9.810 mm	9.390 mm
U - Maximum Digging Depth	6.730 mm	6.210 mm
V - Maximum Digging Height	9.680 mm	9.620 mm
W - Maximum Unloading Height	6.950 mm	6.840 mm
W' - Maximum Unloading Height	2.520 mm	3.040 mm
X - Minimum Vertical Wall Digging Depth	5.250 mm	5.050 mm
Y - Minimum Swing Radius	3.520 mm	3.550 mm
Z - Maximum Digging Depth (2440 mm level)	6.540 mm	6.010 mm

* Standard

III. DIGGING PERFORMANCE

Standard Bucket Capacity (SAE)	1,10 m ³
Bucket Digging Force (Power Boost) ISO	15.100 (15.900) kgf
Arm Crowd Force (Power Boost) ISO	10.400 (11.000) kgf



HIDROMEK®

FACTORY - HEAD OFFICE

Ahi Evran OSB Mahallesi Osmanlı Caddesi No:1 06935 Sincan / ANKARA / TURKEY
Tel: (+90) 312 267 12 60 Fax: (+90) 312 267 12 39
www.hidromek.com

Notice:
Hidromek has the right to modify the specifications and design of the model indicated on this brochure without prior notice.